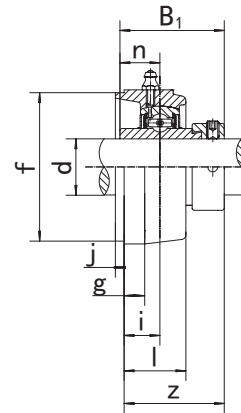
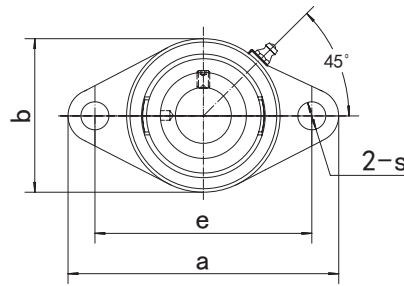


**HCCJTZ2 (Normal-duty)**

**Flange Units (Oval)**



Unit NO.	Dimensions ( mm / in. )												Bolt Size mm/in.	Bearing No.	Housing No.	Weight (kg)	
	d	a	e	i	g	l	s	j	b	f	z	B <sub>1</sub>					n
HCCJTZ204	20 4-7/16	112.5 3-35/64	90 3/4	19 3/4	10 25/64	31.7 1-1/4	11.5 29/64	3.5 9/64	60.5 2-13/32	55 2-11/64	45.6 1-51/64	43.7 1.720	17.1 0.673	M10 3/8	HC204RG	CJTZ204	0.54
HCCJTZ205	25 4-7/8	124 3-57/64	99 3/4	19 15/32	12 1-3/32	28 29/64	11.5 9/64	3.5 2-3/4	70 2-23/64	60 1-13/16	45.9 1.748	44.4 1.906	17.5 0.689	M10 3/8	HC205RG	CJTZ205	0.64
HCCJTZ206	30 5-19/32	142 4-19/32	116.5 43/64	17 15/32	12 1-1/16	27 29/64	11.5 1/8	3 3-17/64	83 3-5/32	80 1-55/64	47.1 1.906	48.4 0.720	18.3 3/8	M10 3/8	HC206RG	CJTZ206	0.91
HCCJTZ207	35 6-7/64	155 5-1/8	130 43/64	17 31/64	12.5 1-1/16	27 35/64	14 5/32	4 3-45/64	94 3-35/64	90 1-15/16	49.3 2.012	51.1 0.740	18.8 1/2	M12 1/2	HC207RG	CJTZ207	1.27
HCCJTZ208	40 6-49/64	172 5-43/64	143.5 25/32	20 33/64	13 1-13/64	30.5 35/64	14 5/32	4 4-9/64	105 3-5/16	100 2-5/32	54.9 2.217	56.3 0.843	21.4 1/2	M12 1/2	HC208RG	CJTZ208	1.71
HCCJTZ209	45 7-5/32	180 5-53/64	148.5 25/32	20 33/64	13 1-7/32	31 35/64	14 5/32	4 4-3/8	111 4-9/64	105 2-5/32	54.9 2.217	56.3 0.843	21.4 1/2	M12 1/2	HC209RG	CJTZ209	1.88
HCCJTZ210	50 7-31/64	190 6-3/16	157 15/16	24 33/64	13 1-27/64	36 35/64	14 5/32	4 4-9/16	116 4-9/64	105 2-7/16	62.1 2.469	62.7 0.969	24.6 1/2	M12 1/2	HC210RG	CJTZ210	2.18
HCCJTZ212	60 9-3/8	238 5-1/8	202 1-3/16	30 5/8	16 1-11/16	43 45/64	18 5/32	4 5-7/16	138 5-1/8	130 3-1/32	76.8 3.063	77.8 1.220	31 5/8	M16 5/8	HC212RG	CJTZ212	3.68